

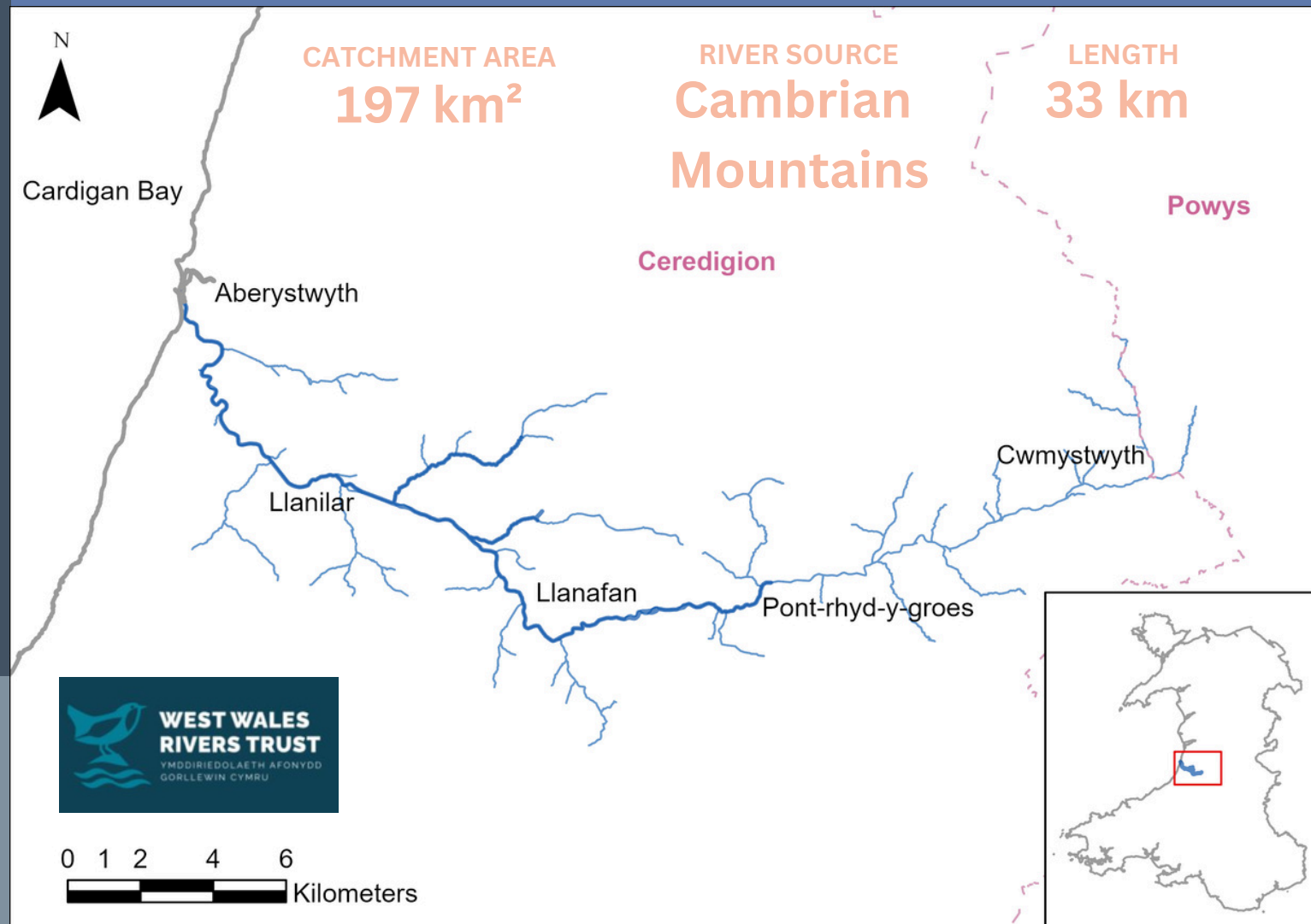
# THE YSTWYTH

The River Ystwyth is formed by the merging of several small streams on the slopes of the Cambrian Mountains in Powys. It flows for approximately 33km in a generally westerly direction, through Cwmystwyth, Pont-rhyd-y-groes, Llanilar and Llanfarian before joining the Afon Rheidol in Aberystwyth Harbour and entering Cardigan Bay.

Due to extensive, historic mining in its middle and upper reaches, which started with the Romans and reached its peak in the 1700s, the Ystwyth still carries elevated levels of metals such as lead.



This river Factsheet was compiled by Afonydd Cymru with support from the Esmée Fairbairn Foundation.



## PROTECTED SITES

The Ystwyth is not one of Wales's Special Area of Conservation-designated rivers. It does have two SACs within its catchment, however. The Elenydd SAC is in the river's headwaters, designated for its Calaminarian grasslands, blanket bogs and Floating water plantain. A little further downstream is the Grogwynion SAC, also designated for its Calaminarian grasslands.



**Floating Water Plantain**  
(*Luronium natans*)

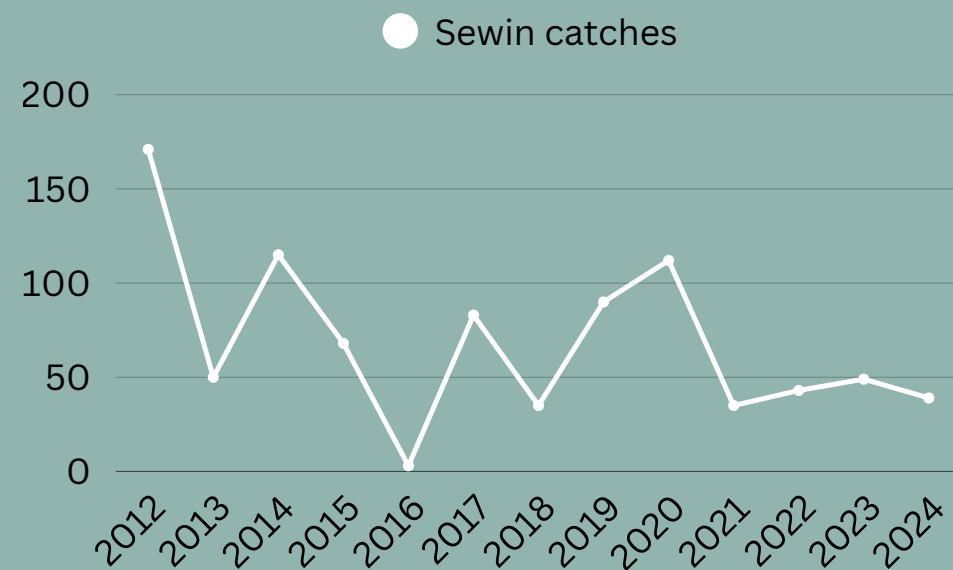
The Ystwyth also flows into the West Wales Marine SAC, designated for its population of Harbour porpoise (*Phocoena phocoena*).



**Harbour porpoise**  
(*Phocoena phocoena*)

Currently, this SAC is in Favourable status.

## SEWIN POPULATIONS AT RISK



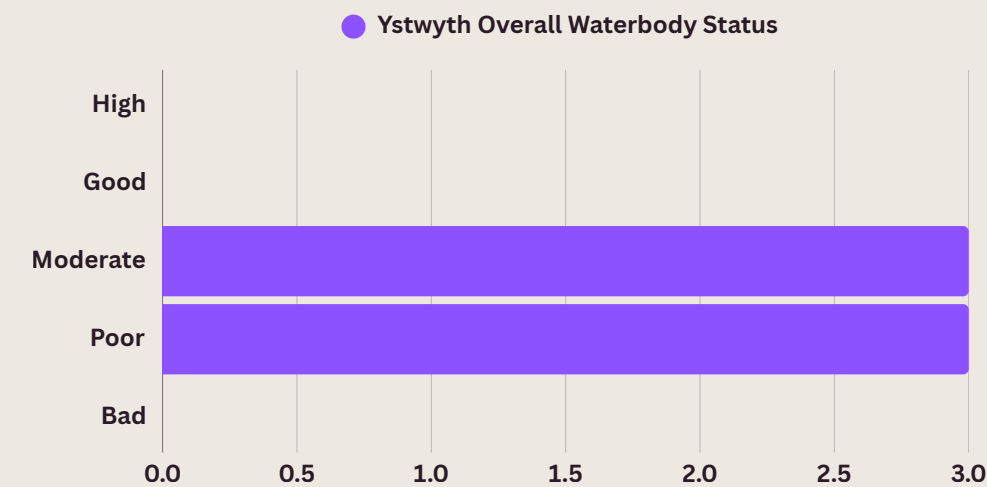
Sewin rod catches from the Ystwyth 2012 - .2024

The Ystwyth is not classified as one of Wales's 23 "Principal Salmon Rivers." Its sewin, however, are at risk, and according to NRW, unlikely to change in the next 5 years.

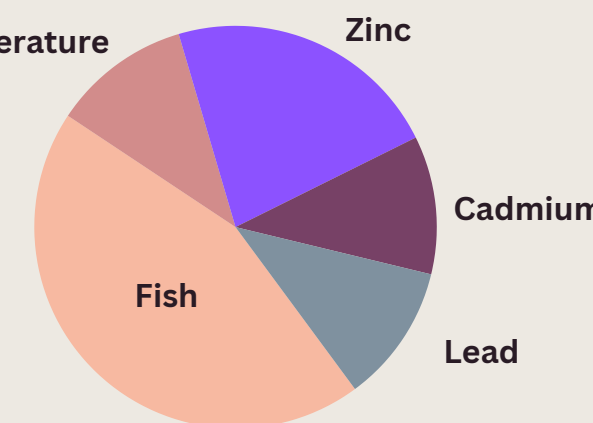
## YSTWYTH NOT IN GOOD HEALTH

The health of our rivers is assessed using a range of ecological and chemical indicators. Under the Water Framework Directive, rivers are split up into "waterbodies" which can be classified as High, Good, Moderate, Poor or Bad. The latest assessments by NRW found that.....

- Of the **6** waterbodies in the Ystwyth catchment, **0** achieve High or Good overall or ecological status.
- **3** of the Ystwyth's waterbodies were classified as Moderate overall, while **3** were classified as Poor. This means all the river's waterbodies are currently failing under WFD.
- Fish numbers were assessed in all **6** waterbodies: **2** were found to be High status for fish, **1** Moderate and **3** Poor.



## DRIVERS OF WATERBODY FAILURE IN THE YSTWYTH



Data: NRW

# AFON YSTWYTH



Lluniwyd y Daflen Ffeithiau hon am yr afon gan Afonydd Cymru gyda chefnogaeth gan Sefydliad Esmee Fairbairn.

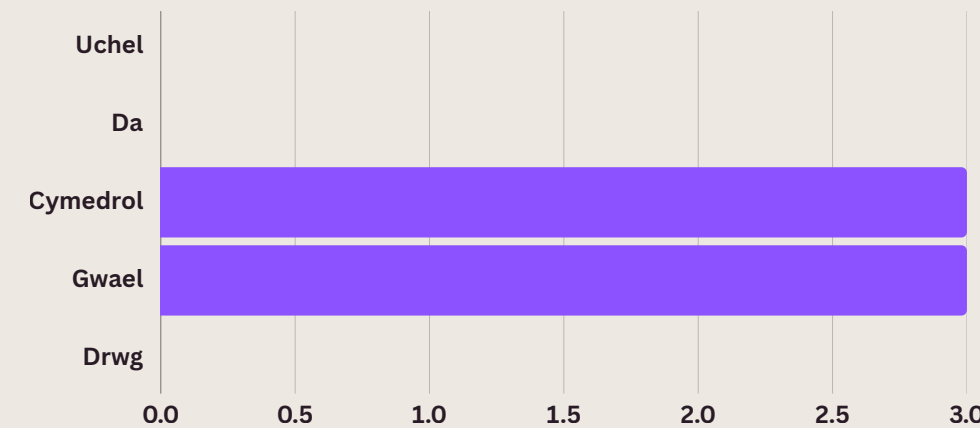


## YSTWYTH DDIM MEWN IECHYD DA

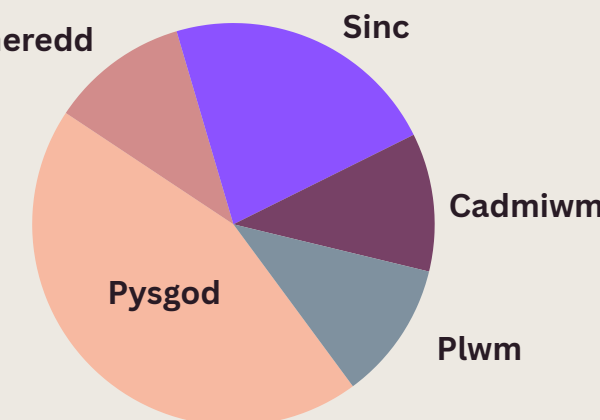
Caiff iechyd ein hafonydd ei asesu gan ddefnyddio amrywiaeth o ddangosyddion ecolegol a chemegol. O dan y Gyfarwyddeb Fframwaith Dŵr, mae afonydd yn cael eu rhannu'n "gyrff dŵr" y gellir eu dosbarthu fel Uchel, Da, Cymedrol, Gwael neu Wael. Canfu'r asesiadau diweddaraf gan CNC fod.....

- O'r **6** chorff dŵr yn nalgylch Afon Ystwyth, nid oes **0** ohonynt yn cyflawni statws cyffredinol neu ecolegol Uchel neu Dda.
- Dosbarthwyd **3** o gyrff dŵr Afon Ystwyth fel Cymedrol ar y cyfan, tra bod **3** wedi'u dosbarthu fel Gwael. Mae hyn yn golygu bod holl gyrff dŵr yr afon yn methu o dan y Gyfarwyddeb Fframwaith Dŵr ar hyn o bryd.
- Aseswyd niferoedd pysgod ym mhob un o'r **6** chorff dŵr: canfuwyd bod 2 o statws Uchel ar gyfer pysgod, **1** Cymedrol a **3** Gwael.

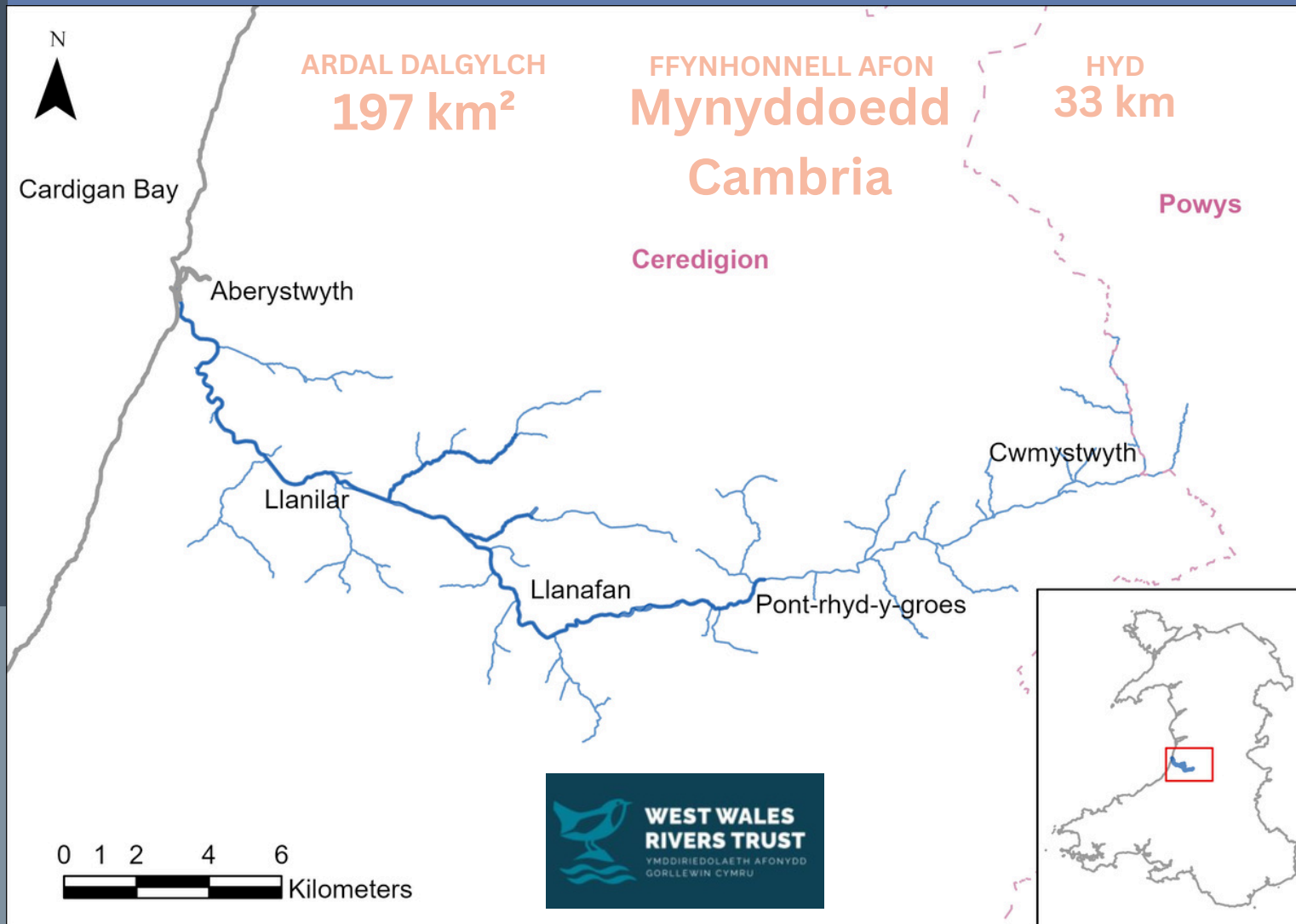
● Ystwyth Overall Waterbody Status



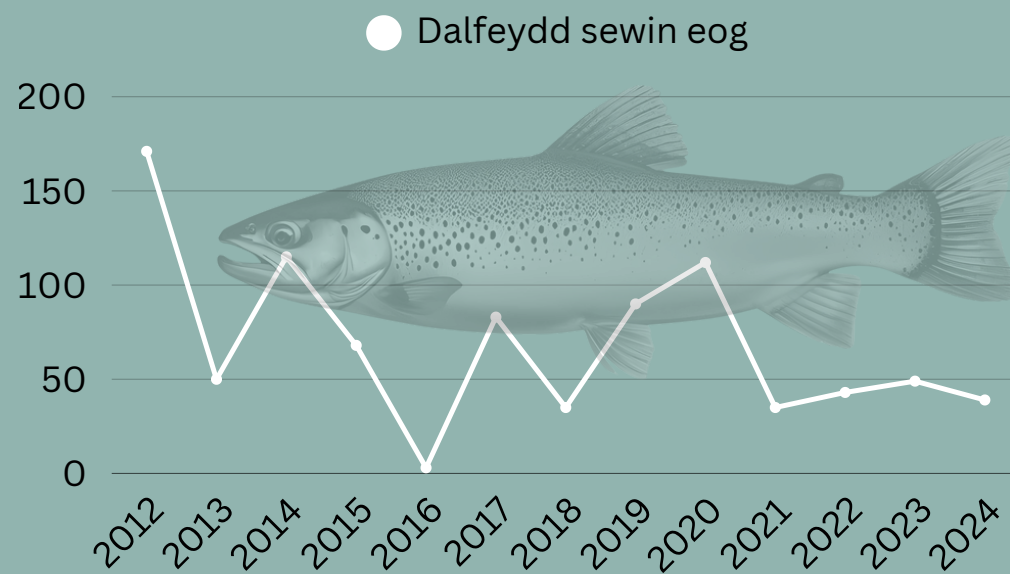
## GYRRWYR METHIANT CORFF DŴR YN YR YSTWYTH



Data: NRW



## POBLOGAETHAU SEWIN MEWN PERYGL



Daliadau sewin â gwialen ar Afon Ystwyth, 2012-2024

Nid yw Afon Ystwyth wedi'i dosbarthu fel un o 23 "Prif Afon Eog" Cymru. Fodd bynnag, mae ei hafonydd mewn perygl, ac yn ôl Cyfoeth Naturiol Cymru, mae'n annhebygol y byddant yn newid yn y 5 mlynedd nesaf.

Ffurfir Afon Ystwyth trwy gydgyfeirio nifer o nentydd bychain ar lethrau Mynyddoedd y Cambrian ym Mhowys. Mae'r afon yn llifo am oddeutu 33 km i'r gorllewin, gan basio drwy Gwmystwyth, Pont-rhyd-y-groes, Llanilar a Llanfarian, cyn ymuno ag Afon Rheidol yng Nghaer Aberystwyth ac ymroi o'r fan honno i Fae Ceredigion.

Oherwydd mwyngloddio helaeth, hanesyddol yn ei rhannau canol ac uchaf, a ddechreuodd gyda'r Rhufeiniaid a chyrrhaeddodd ei anterth yn y 1700au, mae Afon Ystwyth yn dal i gario lefelau uchel o fetelau fel plwm.

## SAFLEOEDD WEDI'U GWARCHOD

Nid yw Afon Ystwyth yn un o afonydd dynodedig Ardal Cadwraeth Arbennig Cymru. Mae ganddi ddwy ACA o fewn ei dalgylch, fodd bynnag. Mae ACA Elenydd ym mlaenau'r afon, wedi'i dynodi am ei glaswelltiroedd Calaminaraidd, ei gorgorsydd a'i lyriad dŵr arnofiol. Ychydig ymhellach i lawr yr afon mae ACA Grogwynion, sydd hefyd wedi'i dynodi am ei glaswelltiroedd Calaminaraidd.



Llyriad-y-Dŵr arnofiol (Luronium natans)

Mae Afon Ystwyth hefyd yn llifo i mewn i ACA Forol Gorllewin Cymru, sydd wedi'i ddynodi oherwydd ei phoblogaeth o lamhidydd yr harbwr (Phocoena phocoena).



Llamhidydd yr harbwr (Phocoena phocoena)

Ar hyn o bryd, mae'r ACA hwn mewn statws Ffafriol.