

RIVER TYWI

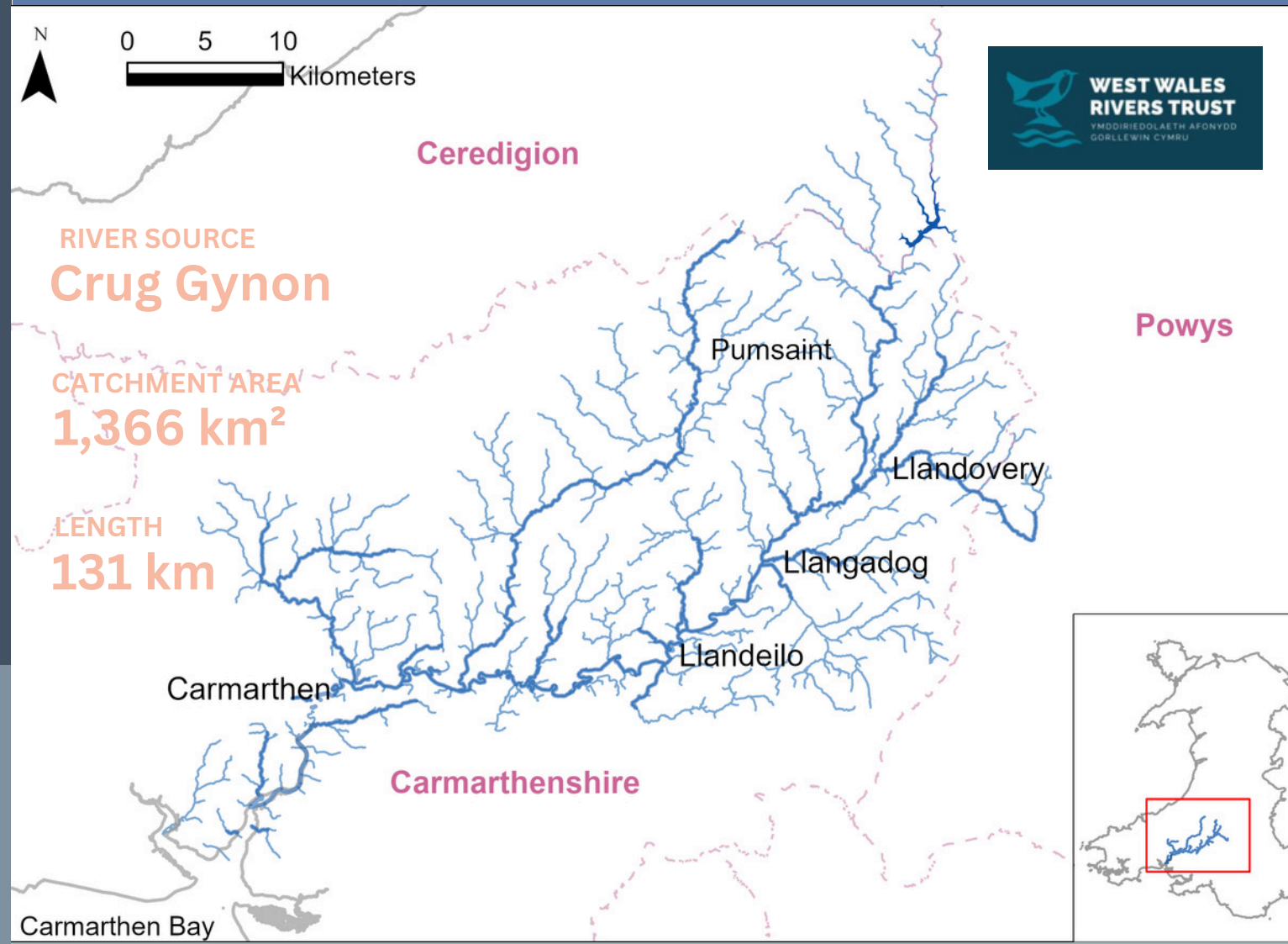
The Tywi (English: Towy) rises within on the lower slopes of Crug Gynan in the Cambrian Mountains. Flowing at first through the Tywi Forest, it soon enters the reservoir Llyn Brianne, built in 1972 to control flows and support abstraction from the river for South East Wales's drinking water.

Below Llyn Brianne, the Tywi flows generally south-westwards, through the towns of Llandovery, Llandeilo before reaching its tidal sections at Carmarthen where it is joined by the Gwili, one of its major tributaries.

The Tywi estuary enters Carmarthen Bay east of Pendine Sands, along with the Afon Taf and both branches of the Gwendraeth.



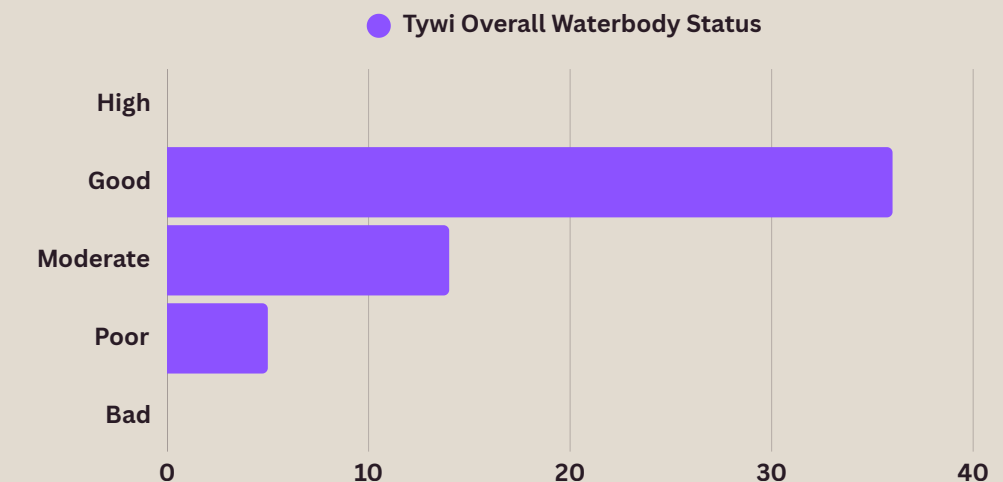
This river Factsheet was compiled by Afonydd Cymru with support from the Esmée Fairbairn Foundation.



TYWI IN GOOD HEALTH?

The health of our rivers is assessed using a range of ecological and chemical indicators. Under the Water Framework Directive, rivers are split up into “waterbodies” which can be classified as High, Good, Moderate, Poor or Bad. The latest assessments by NRW found that.....

- Of the **55** waterbodies in the Tywi catchment, **0** achieve High overall or ecological status.
- However, **36** of the Tywi's waterbodies were classified as Good overall, while **14** were classified as Moderate and **5** as Poor.
- Fish numbers were assessed in **52** of the **55** waterbodies: **36** were found to be High or Good status for fish, **11** were Moderate and **5** Poor.



SPECIAL AREA OF CONSERVATION

The Tywi is designated SAC primarily for:



Twaite Shad



European Otter

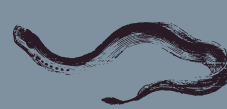
With other species present as a qualifying feature, but not a primary reason for site selection, including:



Bullhead



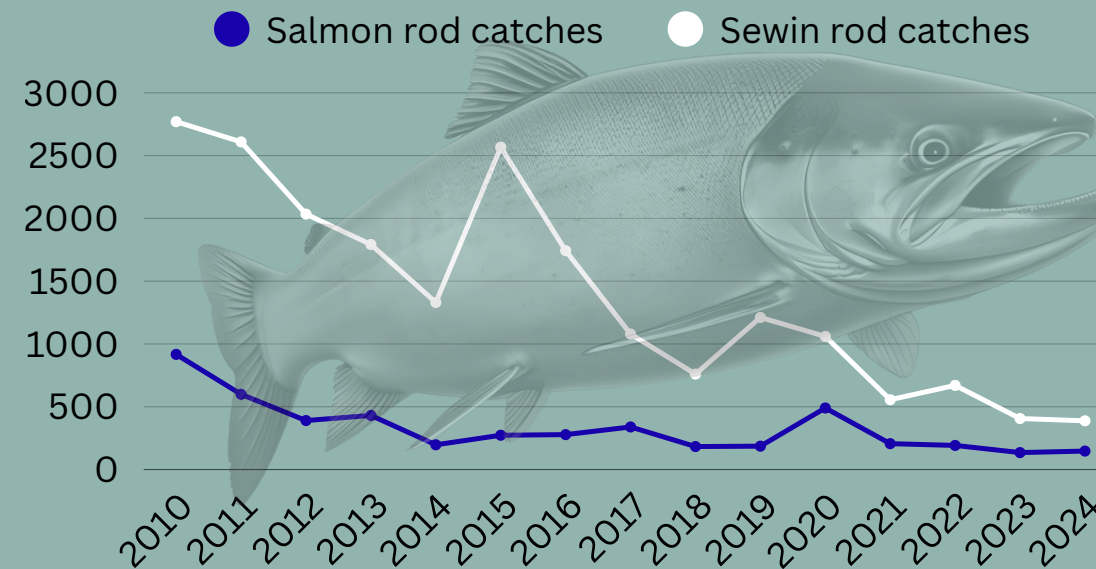
Sea Lamprey



Brook & River Lamprey

The aim is to achieve a favourable conservation status for these species and habitats. Currently, all except Otter are in **unfavourable status**.

TYWI SALMON & SEWIN POPULATIONS AT RISK

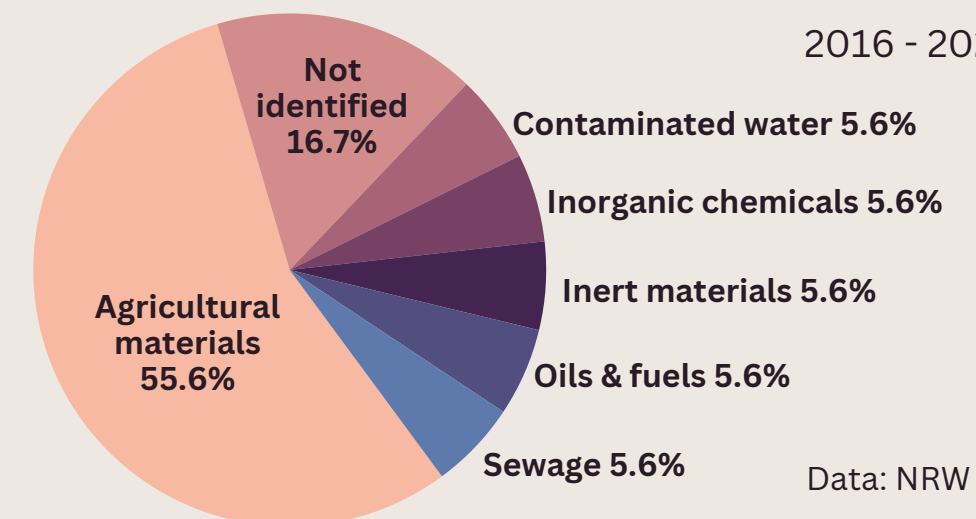


In its latest assessments NRW have classified Tywi salmon and sewin populations as depleted and at risk, and unlikely to change by 2029.

Tywi salmon and sewin rod catches 2010 - 2024.

SOURCE OF POLLUTION INCIDENTS

2016 - 2022



Data: NRW

AFON TYWI

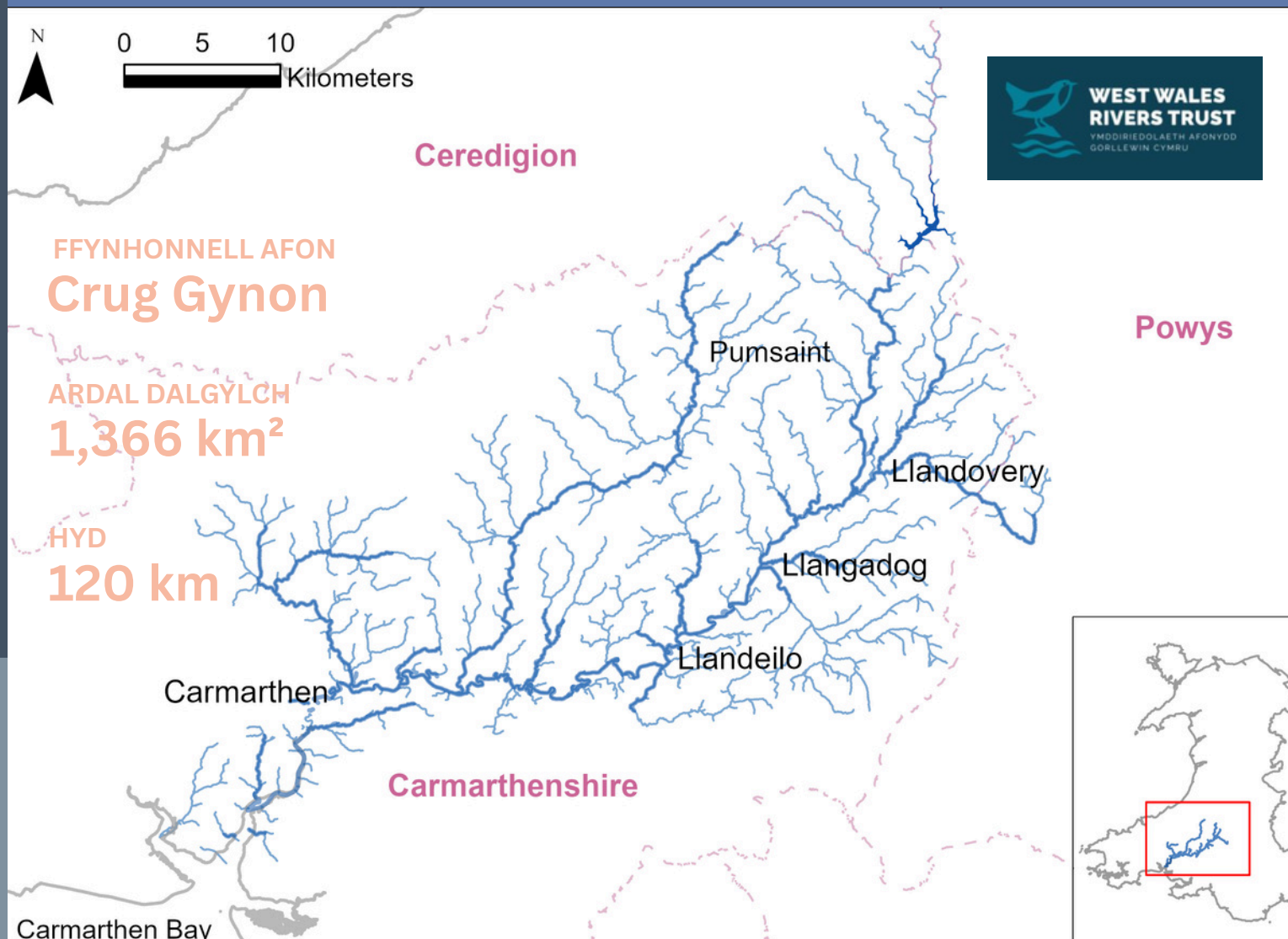
Mae Afon Tywi (Saesneg: Towy) yn codi ar lethrau isaf Crug Gynan ym Mynyddoedd Cambria. Gan lifo i ddechrau trwy Goedwig Tywi, mae'n mynd i mewn i gronfa ddŵr Llyn Brianne, a adeiladwyd ym 1972 i reoli llifau a chefnogi tynnu dŵr o'r afon ar gyfer dŵr yfed De-ddwyrain Cymru.

Islaw Llyn Brianne, mae Afon Tywi yn llifo tua'r de-orllewin yn gyffredinol, trwy drefi Llanymddyfri a Llandeilo cyn cyrraedd ei rhannau llanw yng Nghaerfyrddin lle mae Afon Gwili, un o'i phrif lednentydd, yn ymuno â hi.

Mae aber Afon Tywi yn ymuno â Bae Caerfyrddin i'r dwyrain o Dywod Pendine, ynghyd ag Afon Taf a'r ddwy gangen o Afon Gwendraeth.



Lluniwyd y Daflen Ffeithiau hon am yr afon gan Afonydd Cymru gyda chefnogaeth gan Sefydliad Esmee Fairbairn.



ARDAL CADWRAETH ARBENNIG

Mae Afon Tywi wedi'i dynodi'n Ardal Cadwraeth Arbennig yn bennaf ar gyfer:



Gyda rhywogaethau eraill, mae rhywogaethau'n bresennol fel nodwedd gymhwyso, ond nid yn brif reswm dros ddewis safle, gan gynnwys:



Llysywen Bendoll y Môr



Penlletwad

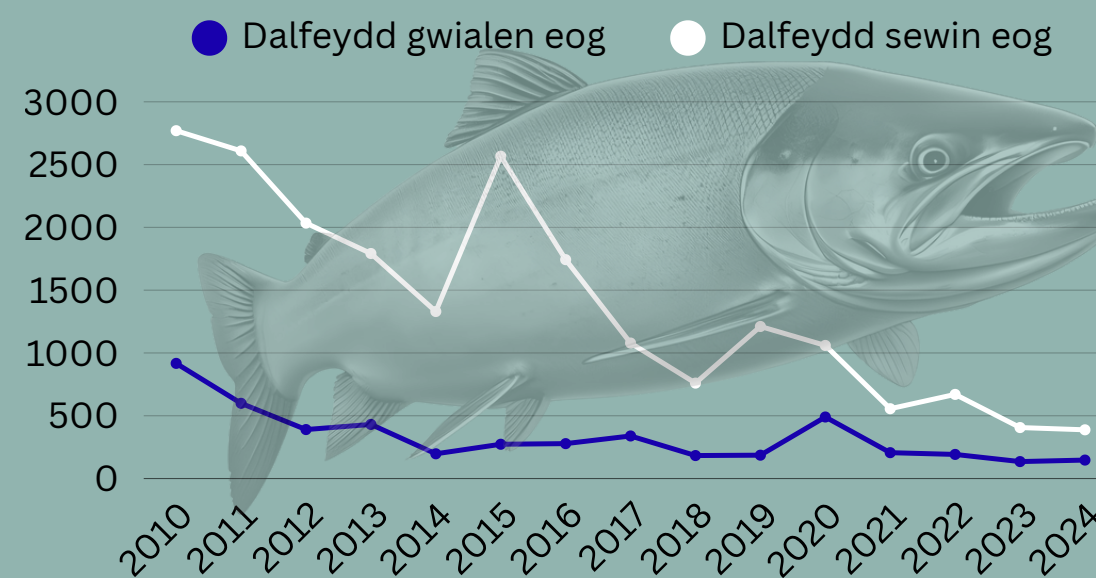


Llysywen Bendoll yr Afon

Y nod yw cyflawni statws cadwraeth ffafriol ar gyfer y rhywogaethau a'r cynefinoedd hyn.

Ar hyn o bryd, mae pob un heblaw am y Dyfrgi mewn statws anffafriol.

POBLOGAETHAU EOG A SEWIN YN Y TYWI O DAN RISG



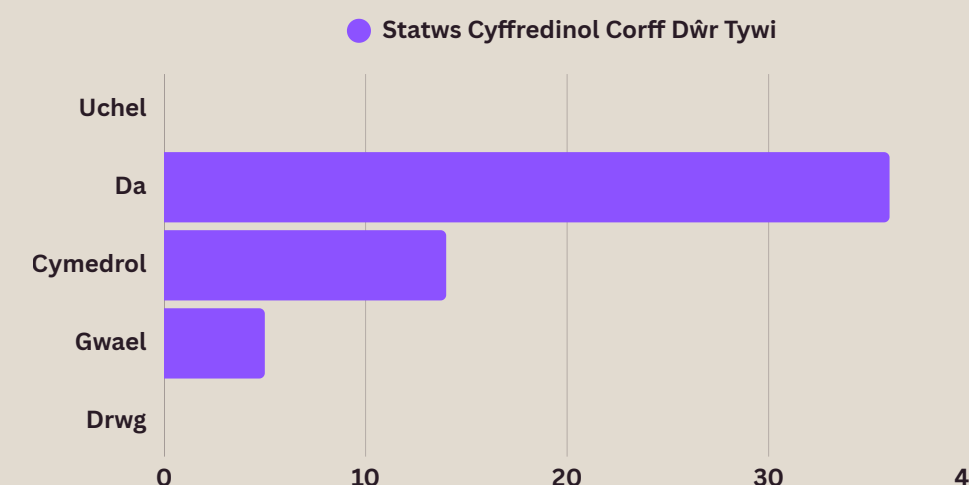
Daliadau eog a sewin â gwialen ar Afon Tywi 2010–2024.

Yn ei asesiadau diweddaraf mae CNC wedi dosbarthu poblogaethau eogiaid a sewiniaid Tywi fel rhai sydd wedi'u disbyddu ac mewn perygl, ac yn annhebygol o newid erbyn 2029.

TYWI MEWN IECHYD DA?

Caiff iechyd ein hafonydd ei asesu gan ddefnyddio amrywiaeth o ddangosyddion ecolegol a chemegol. O dan y Gyfarwydddeb Fframwaith Dŵr, mae afonydd yn cael eu rhannu'n "gyrff dŵr" y gellir eu dosbarthu fel Uchel, Da, Cymedrol, Gwael neu Wael. Canfu'r asesiadau diweddaraf gan CNC fod.....

- O'r **55** o gyrff dŵr yn nalgylch Tywi, nid oes **0** ohonynt yn cyflawni statws cyffredinol neu ecolegol Uchel.
- Fodd bynnag, dosbarthwyd **36** o gyrff dŵr Tywi fel Da ar y cyfan, tra bod **14** wedi'u dosbarthu fel Cymedrol a **5** fel Gwael.
- Aseswyd niferoedd pysgod mewn **52** o'r **55** o gyrff dŵr: canfuwyd bod **36** o statws Uchel neu Dda ar gyfer pysgod, roedd **11** yn Ganolig a **5** yn Wael.



FFYNHONNELL DIGWYDDIADAU LLYGREDD

2016 - 2022

